



SHERATON

EST. 1937

Sheraton Jumeirah Beach Resort

Where
the World
Comes
Together



SHERATON
Jumeirah Beach Resort

About the Hotel

Name of the Hotel: Sheraton Jumeirah Beach Resort

Company: Marriott International

Category: 5 stars. Year of the opening: 1999

Location: first line of the JBR beach, next to Dubai Marina

Number of Rooms: 256; Floors: 9

Main Room Types:

Deluxe Walk View Room – 72 king & 48 twin

Deluxe Sea View Room – 57 king & 18 twin

Triple Deluxe Room – 11 king + single bed

Club Walk View Room (with access to Sheraton Club) – 6 king & 7 twin

Club Sea View Room (with access to Sheraton Club) – 12 king & 2 twin

Junior Suite Walk View (with access to Sheraton Club) – 9 king

Junior Suite Sea View (with access to Sheraton Club) – 7 king

On request:

Club Executive Suite (with access to Sheraton Club) – 2 king

Garden Suite (2 bedrooms, duplex, with access to Sheraton Club) – 3 king/twin

Garden Suite (3 bedrooms, duplex, with access to Sheraton Club) – 1 king/king/twin

Royal Suite (with access to Sheraton Club) – 1 king

Interconnecting Rooms: 32 sets (64 rooms)

Rooms with Terrace: 13 (on request)*

Rooms with Balconies: 20 (on request)*

Accessible Rooms: 4 (all Deluxe Walk View Rooms)

**Rooms with terrace / balconies are subject to availability at the time of arrival & additional charge of AED 200 per night, paid by the guests.*

Meal Plans:

Breakfast (BB)

Half-Board (HB)

Full-Board (FB)

All-Inclusive (AI) – Silver & Gold

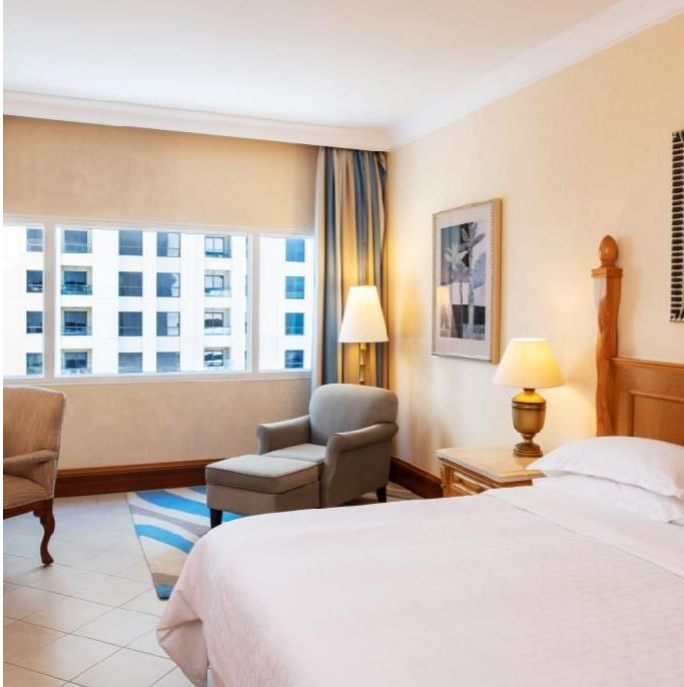
Child Policy:

1 child up to 13,99 y.o., and 1 child up to 5,99 y.o. stay free of charge on parents' meal plan, in existing bedding.

Child Extra bed – at additional charge.

Rooms

All rooms are 36 sq.m. In the rooms: Wi-Fi (free across the resort), tea, coffee, water, mini bar, iron & ironing board, satellite TV, safety box



Deluxe Walk View Room

King (180x200) or twin (120x200 each)
Max. one extra bed (90x200)



Deluxe Sea View Room

King (180x200) or twin (120x200 each)
Max. one extra bed (90x200)



Triple Deluxe Room

King bed (180x200) + Single bed (120x200)
No extra beds may be placed in this unit

Sheraton Club



Sheraton Club Lounge Benefits

Club Rooms (Walk/Sea) – 36 sq.m.

Junior Suites (Walk/Sea) – 55 sq.m.

- Rooms are located on 7, 8, 9 floors
- Club Lounge is on the 9th floor
- Wi-Fi (free across the resort)
- Breakfast in the main restaurant 6:30AM – 11:00AM
- Snacks, tea, coffee throughout the day 1:00PM – 10:00PM
- Happy Hour every evening from 6:30PM – 8:30PM

All-Day Dining



Palm Garden Restaurant & Terrace

Open Daily 6:30AM - 11:00AM
12:30PM - 3:30PM
7:00PM - 10:30PM

Friday Brunch 1:00PM - 4:00PM

An all-day dining buffet offering international cuisine.

BB: buffet (water, juices, tea, coffee)

HB: breakfast + lunch or dinner

FB & AI: breakfast + lunch + dinner

Lunch & Dinner on HB & FB – only buffet;
Lunch & Dinner on AI – buffet + drinks
(soft & alc.)

*Thursday night Seafood night is
excluded from the HB, FB, and AI
packages.

À la carte Restaurants

Chilli & Chutney | Indian

Open Daily 6:00PM – 11:00PM (Except Monday)

For dinner, the guests on HB, FB, AI are offered set menus (with drinks on AI)

Al Hadiqa | Arabic

Open Daily 6:00PM - 2:00AM

For dinner, the guests on HB, FB, AI are offered set menus (with drinks on AI)

The Peacock | Chinese

Open Daily 6:00PM - 11:00PM (Except Sunday)

For dinner, the guests on HB, FB, AI are offered set menus (with drinks on AI)



Lounges & Bars



Bliss Beach Lounge

Open Daily 12:30PM - 3:00AM



Stella Beach Bar

Open Daily 10:00AM – 9:00PM



Azure Pool Bar

Open Daily 9:00AM – 6:00PM

Lounges & Bars



Tacolicious Food Truck
Open Daily 12:00PM - 9:00PM
Tacos & More



Black Goose Buns & Brews
Open Daily 12:30PM – 3:00AM



Resort

- Private beach
- Sunbeds, towels & umbrellas
- Gardens & lawns
- Beach volleyball
- Watersports

(50% off on non-motorized activities, for guests on AI)



Pool

- Pool (size 350 sq.m.)
- Kids pool (depth 50 cm)
- Sunbeds, umbrellas, and towels
- Ice cream hut
- Table tennis
- Water polo and aqua aerobics



Health & Beauty



Armonia Spa

Open Daily 10:00AM – 10:00PM

Massages, Hammam.

50% off Spa services for guests on AI.



Sheraton Fitness

24/7

Gym & 2 Squash courts



Pirates Kids Club

Open Daily 10:00AM - 7:00PM

4-12 years old

Kids club & 2 kids playgrounds

Location

Sheraton Jumeirah Beach Resort

Al Mamsha Road, P.O. Box 53567

Dubai, United Arab Emirates

